



Toxicology

Rapid detection of “synthetic cannabis,” also known as K2 & Spice.

# Synthetic Cannabinoid Dip Card

Urine Drug Screening Device.

*Targets 2 prevalent synthetic  
cannabinoid metabolites in urine:  
JWH-018 and JWH-073.*

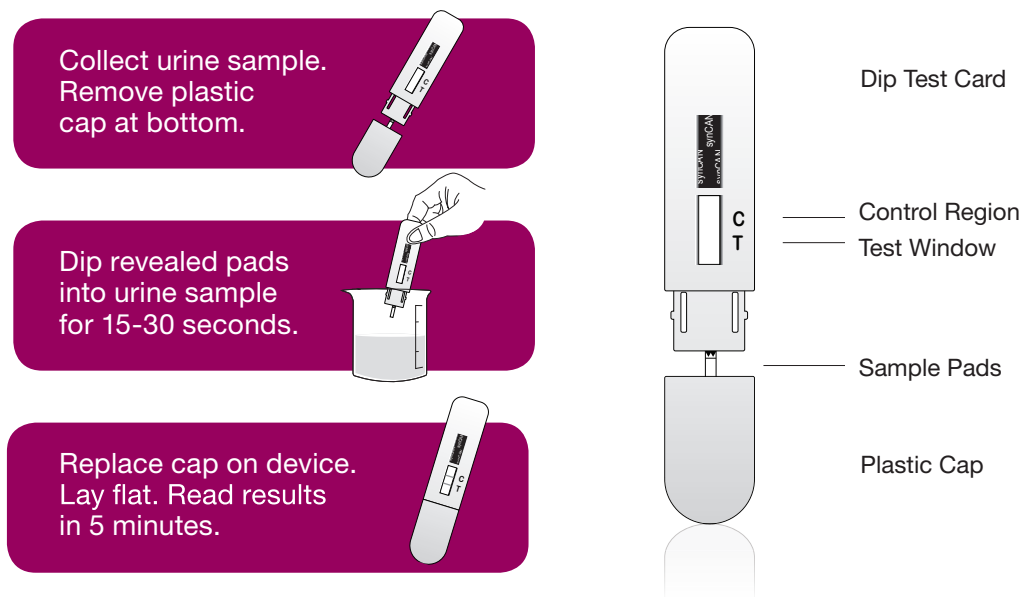


Substance abuse testing with more **substance.**

## Features & Benefits

- » Qualitative detection of JWH-018 and JWH-073 metabolites in urine at 30 ng/mL cutoff level
- » Targets abuse of many “herbal” smoking blends including: K2, K3, Spice, Genie, Black Mombó, Pot-pouri, Buzz and many more
- » Onsite results in 5 minutes
- » Simple procedure: collect, dip, read results
- » Average window of detection is 72 hours following a single low dose; in case of chronic use the window is much longer
- » Perform initial screening and order further lab testing for enhanced accuracy

## How it works



PRODUCT PROCEDURE NOTE: Refer to product insert for complete instructions, limitations, and warnings.

This assay provides only a preliminary result. Careful consideration and professional judgment must be applied to any drug of abuse test result, particularly in evaluating a preliminary positive result. In order to obtain a confirmed analytical result, a more specific alternate chemical method is needed. Gas chromatography/mass spectrometry (GC/MS) or Liquid Chromatography/Mass Spectrometry (LC/MS) are the preferred confirmation methods.

**Alere**  
Australia  
1800 622 642 Freecall in AUS  
+61 7 3363 7100 Office  
+61 7 3363 7199 Fax  
au.enquiries@alere.com Email  
**alere.com.au**

**Alere Ltd**  
New Zealand  
0800 466 951 Freecall in NZ  
0800 466 951 Office  
0800 466 958 Fax  
nz.enquiries@alere.com Email  
**alere.co.nz**

Distributed by: